

Building Health Care in PEC

PROJECT PARTNERS



Master program complete - phase two of Ministry approval process expected to get underway this fall

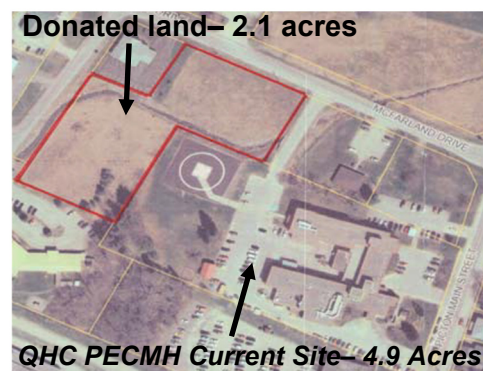
QHC’s master program will soon be submitted to the South East Local Health Integration Network for endorsement before going to the Ministry of Health and Long Term Care (MOHLTC). The MOHLTC requested the program before granting approval of the Pre-Capital Submission - the first phase of a lengthy process to build a new hospital in Ontario. The master program provides context of how the new PECM hospital would fit into the overall service delivery plan of QHC as a whole.

QHC’s Capital Projects Director Bill Andrews predicts it will be fall before approval is received to move forward with the business case— phase two of the approval process. The business case is expected to take approximately six months to complete once the pre-capital submission approval is received. The business case provides a detailed look at everything from services and options for the building to land options and what it will cost.

In early April, an architectural company was chosen by QHC for a five year term. Part of the work of HDR Architecture Associates is to gather information and develop the plans

needed for the business case. The architects have been provided with all the documents on the existing hospital and have visited the site as well as the McFarland land.

The donation of just over two acres of land adjacent to the existing hospital was finalized by QHC Capital Projects in May. While it’s too early in the process to make any decision, Andrews says the additional land may enhance the viability of having a new hospital built at the existing site of 4.9 acres. The planning partners will take many factors into consideration when making a recommendation about potential locations. Ultimately it is up to the Ministry of Health to approve the new location.



A new look for PECMH Foundation

The Prince Edward County Memorial Hospital Foundation (PECMHF) has recently adopted a new logo (displayed among the list of project partners). The

new design provides a modern visual dynamic to the foundation’s brand and identity and was recently launched along with a new website.

PROJECT PARTNERS



For more information contact:
Catherine Walker
Manager, Community Relations
613-969-7400, ext. 2689
or cwalker@qhc.on.ca



Christie's positive bedside manner shines through with PECMH inpatient Thomas Dunlop.

Patient care moment with Occupational Therapist (OT) Christie Elsey

OT Christie Elsey works at QHC PECMH twice per week. She explains what occupational therapy is and why it's important to patient care.

Occupational therapy helps to solve the problems that interfere with your ability to do the things that are important to you. It can also prevent a problem or minimize its effects. When an injury, illness, disability or other problem limits your ability to take care of yourself, participate in productive activities (paid or unpaid work), or enjoy your leisure time, then

Occupational therapists help you to learn new skills for the job of living.

Occupational therapy is important to our patients at Quinte Health Care in a variety of settings as we assess, treat, and educate patients in returning safely to the activities that they were participating in before they came to hospital.

At PECMH, we play a very significant role in discharge planning to ensure that our patients have the optimal services and equipment needed to facilitate patients to return to their homes when they are medically ready.

PECMH Auxiliary partnerships in bloom



The Prince Edward County Memorial Hospital Auxiliary is a key partner in the redevelopment project for a new hospital. This project is just one of a number of

worthwhile collaborations the Auxiliary is involved with to benefit the community.

During spring and summer months, the Auxiliary's partnership with the local Horticultural Society is on display as the gardens around the hospital come to life.

"A beautiful garden can be an oasis in the desert of despair that patients and their families often find themselves," explains



Auxiliary President Liz Jones. "Our memorial garden may provide a moment of relief and that alone is a good

enough reason to support and maintain it."

The Auxiliary provides funds and the horticultural society volunteers plant and

maintain the gardens. Other collaborations include supporting the Canadian Blood Services by providing Auxiliary volunteers to help during blood donor clinics. Each September the Auxiliary volunteers deliver *Meals on Wheels* for PEC Community Care for Seniors.

The Auxiliary is often asked to provide funds or volunteers for the initiatives of other organizations. They recently granted funds to the Lions Club of Cherry Valley to purchase audio and visual testing equipment for use in testing elementary age school children in all Prince Edward County schools. They recently contributed to an automated external defibrillator for the Picton Golf Club.

"Never was the adage 'many hands makes light work' more real than in the County," says Ms. Jones. "As we help our neighbours they help us. The various community minded organizations talk to each other and lend a hand in a reciprocal arrangement that makes us all better."

All this in addition to the remarkable support the Auxiliary provides to PECMH through volunteer programs and donations!